

**JEFFERSON COUNTY AGRICULTURAL DISTRICT #3 SOUTHWEST - MAP 1
ADAMS, HENDERSON, HENDERSON BAY & SACKETS HARBOR QUADRANGLES**

COUNTY: JEFFERSON

DISTRICT NUMBER: 3, SOUTHWEST

TOWNS: ADAMS, ELLISBURG, HENDERSON, HOUNSFIELD, LORRAINE, and WATERTOWN

CREATION DATE: 02-04-1986

SHEET 3 OF 4

303b ADDITIONS DATES

03/08/2005	09/06/2006
02/15/2007	02/06/2008
12/31/2008	01/15/2010
11/22/2011	11/29/2014
12/15/2015	04/17/2017

7 1/2' QUADRANGLES

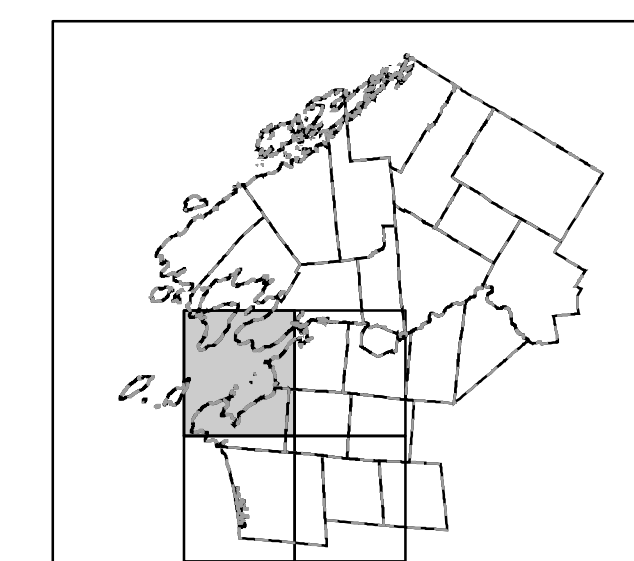
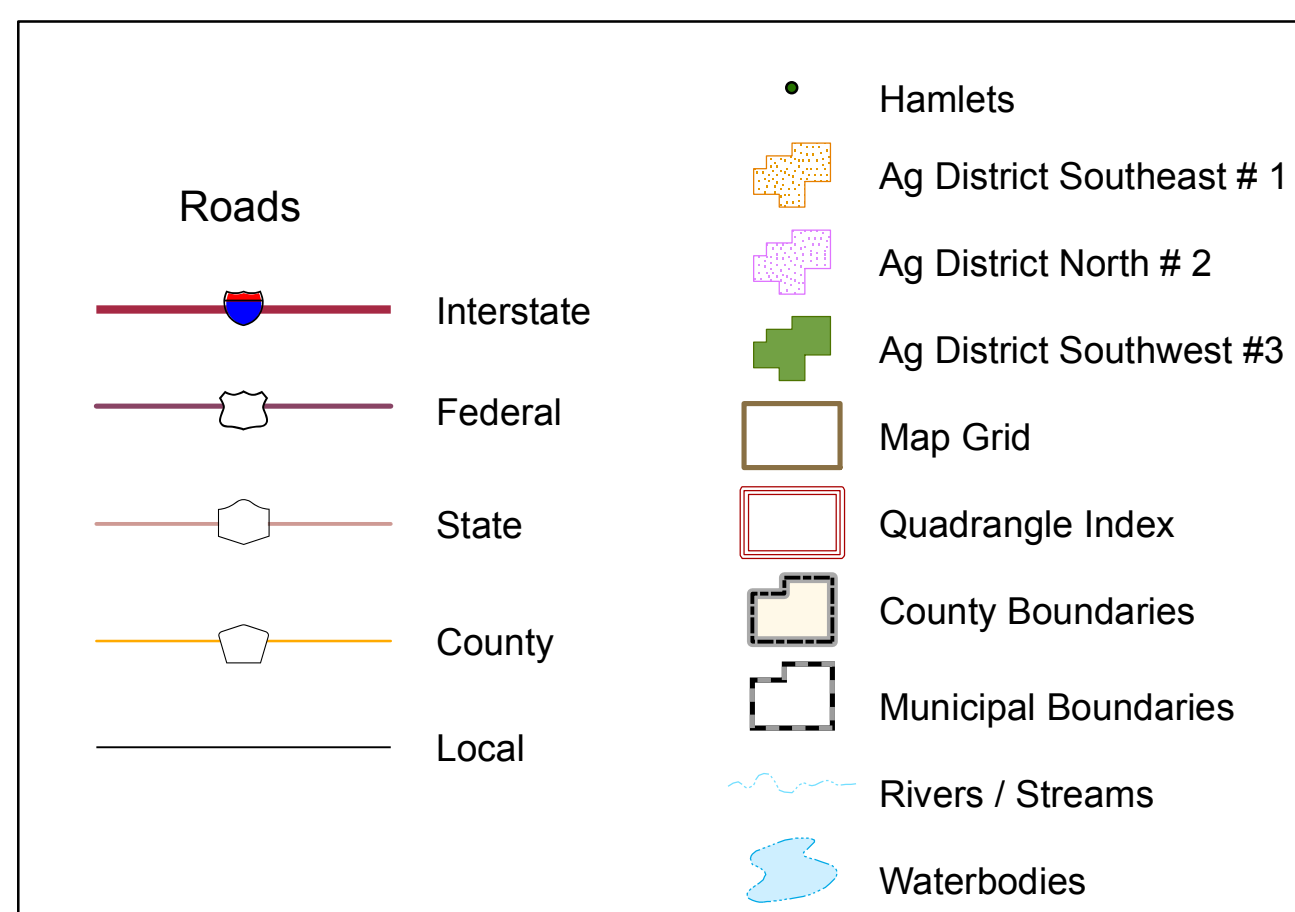
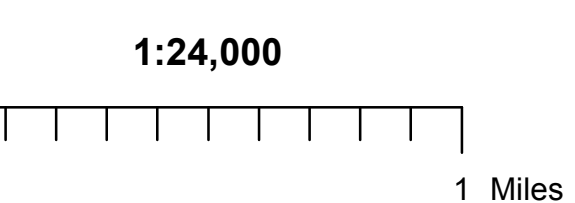
- ADAMS
- ELLISBURG
- HENDERSON
- HENDERSON BAY
- RODMAN
- SACKETS HARBOR
- SANDY CREEK
- WATERTOWN

DATE

- 4-13-2004
- 8-17-2004
- 8-3-2010
- 1-14-2011
- 11-15-2017

MAP STATUS-IRIS

- 8 YEAR REVIEW-MODIFIED (CONSOLIDATION OF 10, 11, PART OF 6)
- CERTIFIED, #10 as "PARENT DISTRICT"
- JEFFERSON COUNTY BOL ADOPTED MODIFIED DISTRICT
- CERTIFIED
- JEFFERSON COUNTY BOL ADOPTED MODIFIED DISTRICT

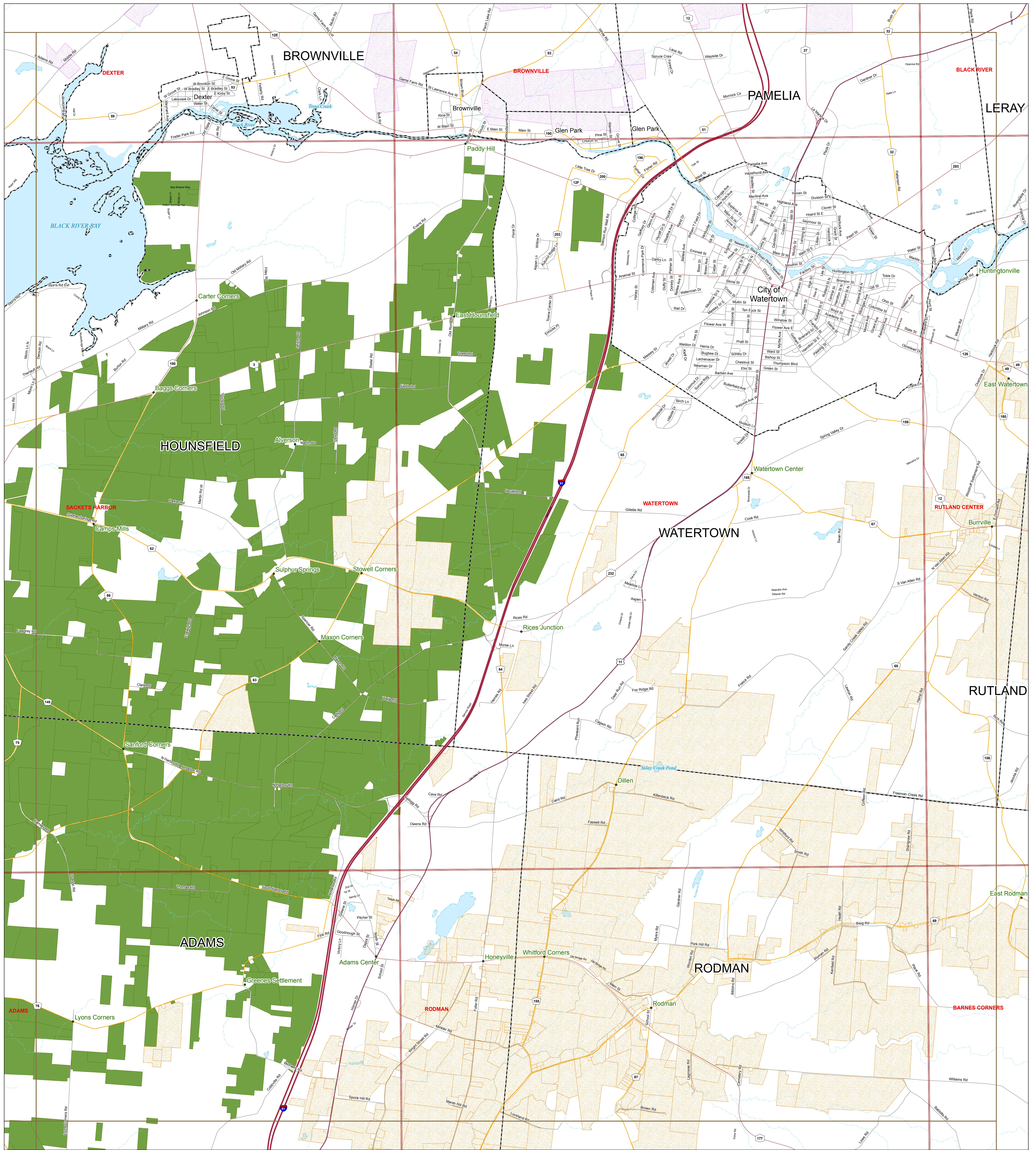


Map prepared by the Jefferson County Department of Planning

New York Central State Plane coordinate system
1983 North American datum

Data Sources
Jefferson County Real Property Tax Services - 2017 Parcels
NYS Office of Cyber Security and Critical Infrastructure Coordination
US Census Bureau





**JEFFERSON COUNTY AGRICULTURAL DISTRICT #3 SOUTHWEST - MAP 2
ADAMS, RODMAN, SACKETS HARBOR & WATERTOWN QUADRANGLES**

COUNTY: JEFFERSON
 DISTRICT NUMBER: 3, SOUTHWEST
 TOWNS: ADAMS, ELLISBURG, HENDERSON, HOUNSFIELD, LORRAINE, and WATERTOWN
 CREATION DATE: 02-04-1986

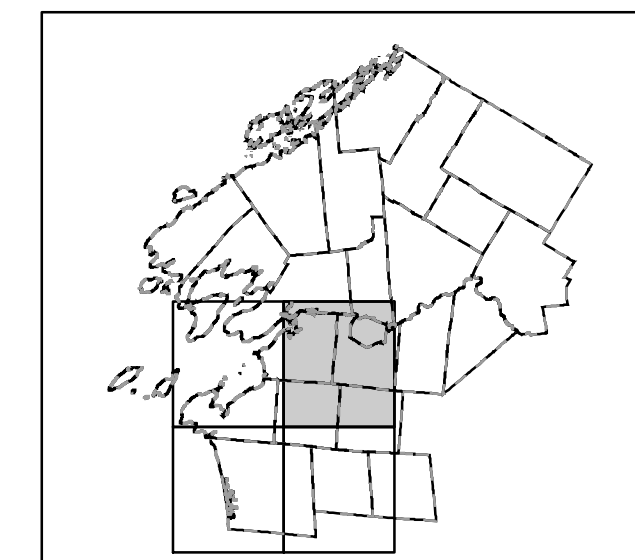
SHEET 3 OF 4

7 1/2' QUADRANGLES
 ADAMS
 ELLISBURG
 HENDERSON
 HENDERSON BAY
 RODMAN
 SACKETS HARBOR
 SANDY CREEK
 WATERTOWN

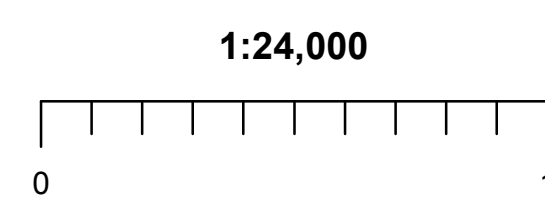
DATE	MAP STATUS-IRIS
4-13-2004	8 YEAR REVIEW-MODIFIED (CONSOLIDATION OF 10, 11, PART OF 6)
8-17-2004	CERTIFIED, #10 as "PARENT DISTRICT"
8-3-2010	JEFFERSON COUNTY BOL ADOPTED MODIFIED DISTRICT
1-14-2011	CERTIFIED
11-15-2017	JEFFERSON COUNTY BOL ADOPTED MODIFIED DISTRICT

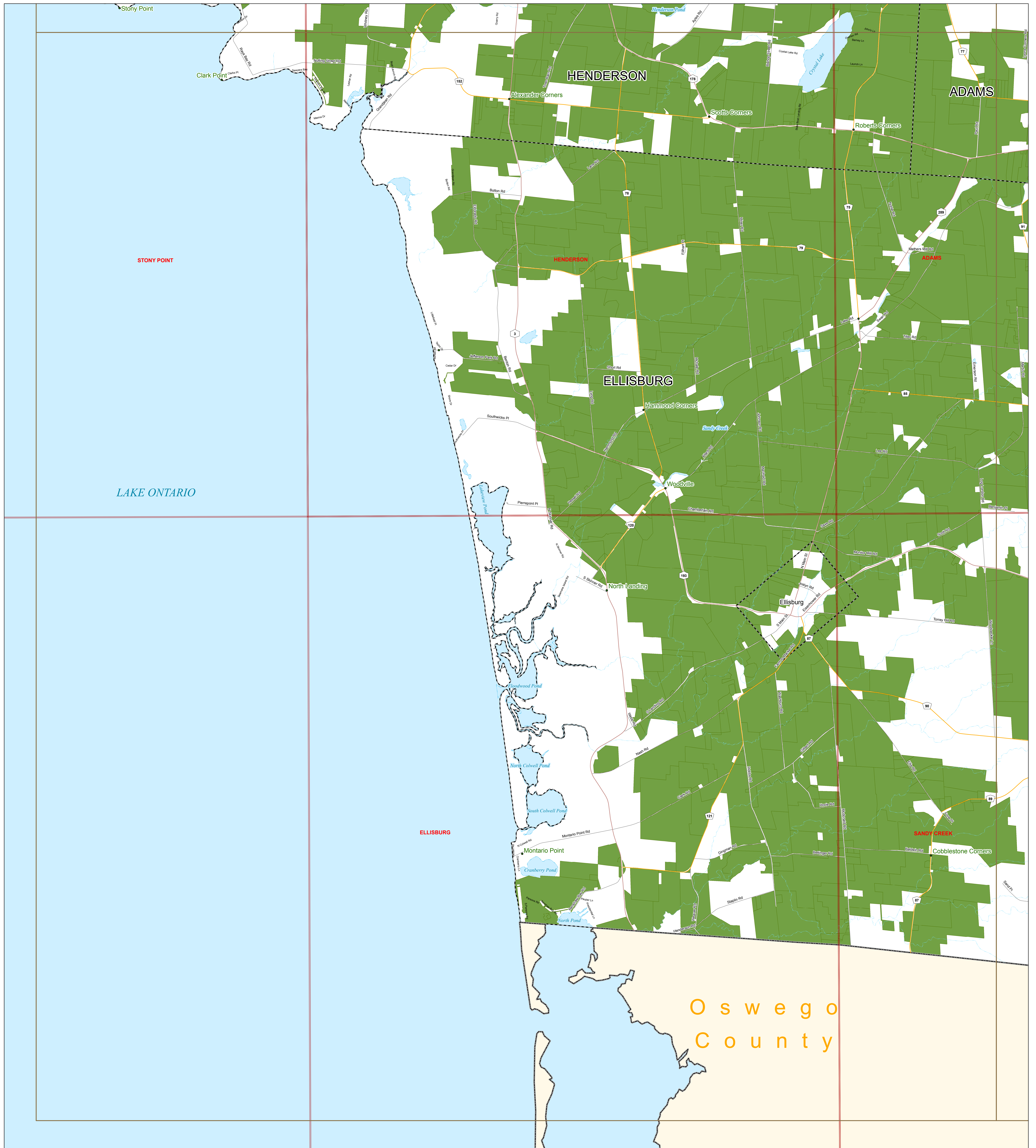
303b ADDITIONS DATES	
03/08/2005	09/06/2006
02/15/2007	02/06/2008
12/31/2008	01/15/2010
11/22/2011	11/29/2014
12/15/2015	04/17/2017

Roads	Hamlets
Interstate	Ag District Southeast # 1
Federal	Ag District North # 2
State	Ag District Southwest #3
County	Map Grid
Local	Quadrangle Index
Rivers / Streams	County Boundaries
Waterbodies	Municipal Boundaries



Map prepared by the Jefferson County Department of Planning
 New York Central State Plane coordinate system
 1983 North American datum
Data Sources
 Jefferson County Real Property Tax Services - 2017 Parcels
 NYS Office of Cyber Security and Critical Infrastructure Coordination
 US Census Bureau





**JEFFERSON COUNTY AGRICULTURAL DISTRICT #3 SOUTHWEST - MAP 3
ADAMS, ELLISBURG, HENDERSON & SANDY CREEK QUADRANGLES**

COUNTY: JEFFERSON

DISTRICT NUMBER: 3, SOUTHWEST

TOWNS: ADAMS, ELLISBURG, HENDERSON, HOUNSFIELD, LORRAINE, and WATERTOWN

CREATION DATE: 02-04-1986

SHEET 3 OF 4

303b ADDITIONS DATES

DATE	DATE
03/08/2005	09/06/2006
02/15/2007	02/06/2008
12/31/2008	01/15/2010
11/22/2011	11/29/2014
12/15/2015	04/17/2017

7 1/2' QUADRANGLES

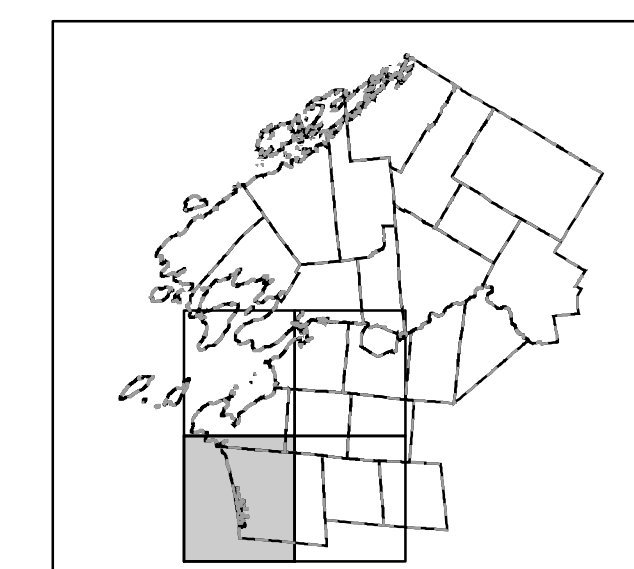
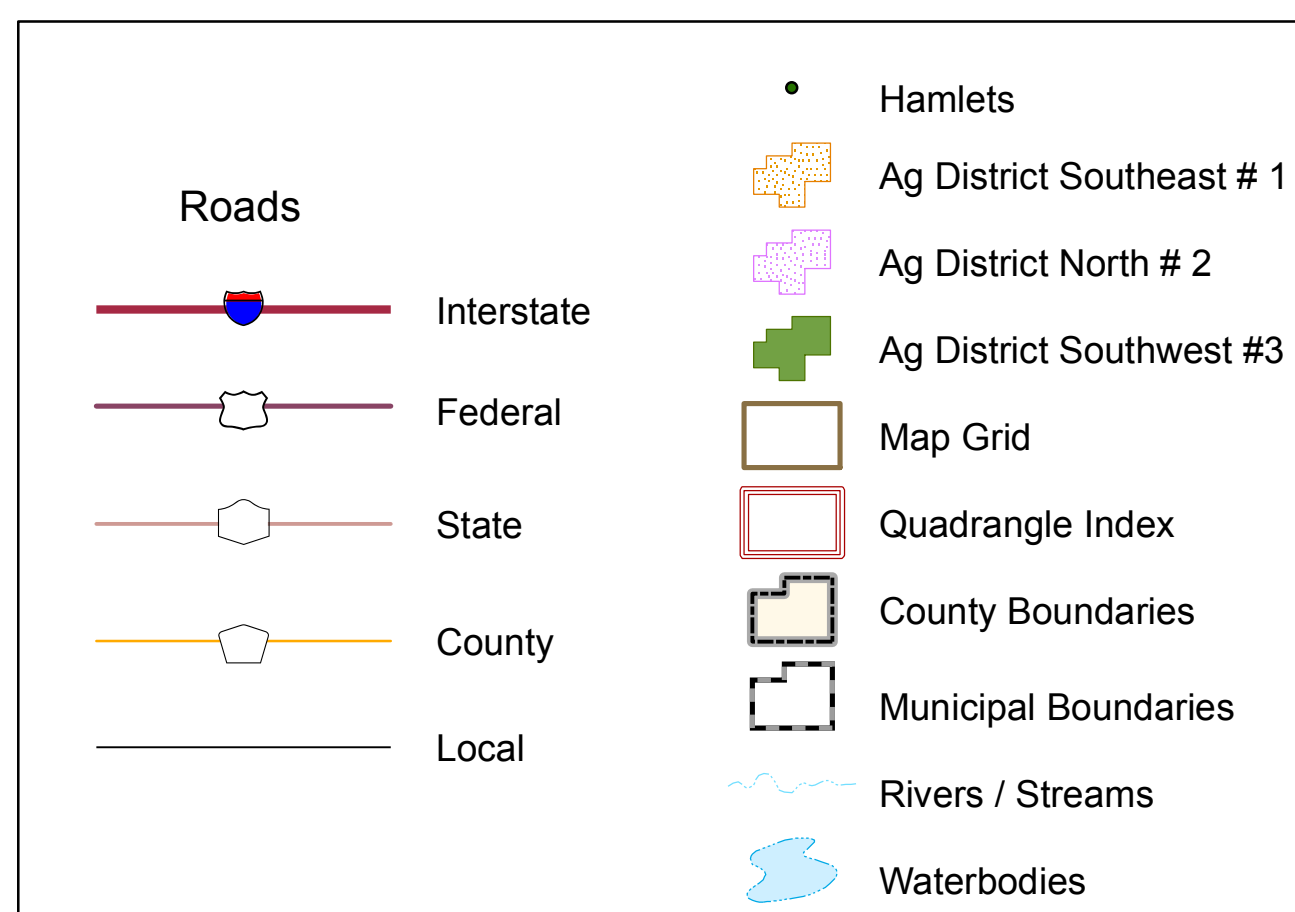
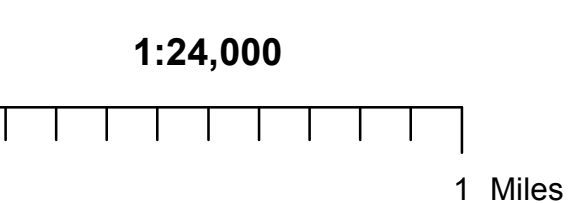
ADAMS
ELLISBURG
HENDERSON
HENDERSON BAY
RODMAN
SACKETS HARBOR
SANDY CREEK
WATERTOWN

DATE

4-13-2004
8-17-2004
8-3-2010
1-14-2011
11-15-2017

MAP STATUS-IRIS

8 YEAR REVIEW-MODIFIED (CONSOLIDATION OF 10, 11, PART OF 6)
CERTIFIED, #10 as "PARENT DISTRICT"
JEFFERSON COUNTY BOL ADOPTED MODIFIED DISTRICT
CERTIFIED
JEFFERSON COUNTY BOL ADOPTED MODIFIED DISTRICT

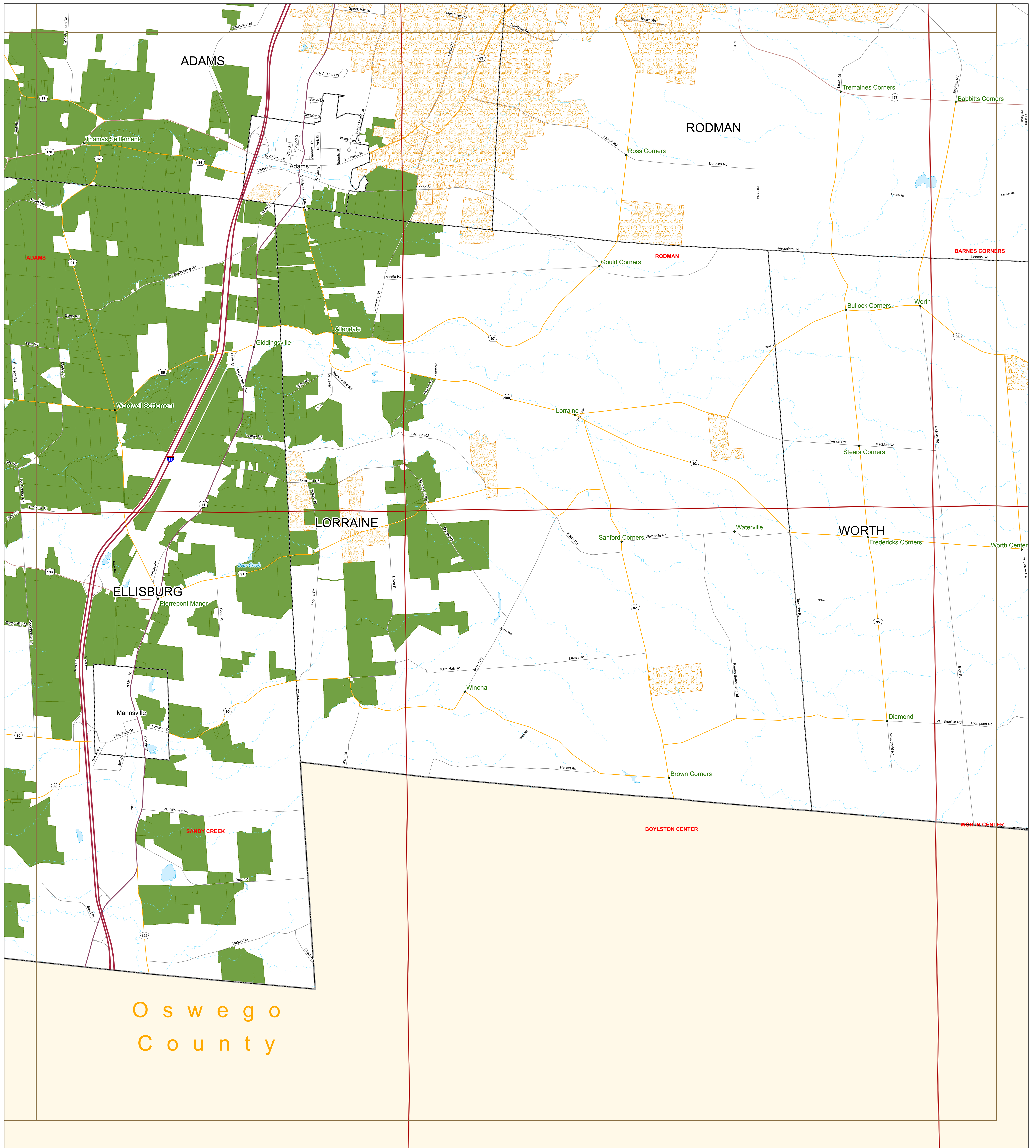


Map prepared by the Jefferson County Department of Planning

New York Central State Plane coordinate system
1983 North American datum

Data Sources
Jefferson County Real Property Tax Services - 2017 Parcels
NYS Office of Cyber Security and Critical Infrastructure Coordination
US Census Bureau





**JEFFERSON COUNTY AGRICULTURAL DISTRICT #3 SOUTHWEST - MAP 4
ADAMS, RODMAN & SANDY CREEK QUADRANGLES**

COUNTY: JEFFERSON
 DISTRICT NUMBER: 3, SOUTHWEST
 TOWNS: ADAMS, ELLISBURG, HENDERSON, HOUNSFIELD, LORRAINE, and WATERTOWN
 CREATION DATE: 02-04-1986

SHEET 3 OF 4

303b ADDITIONS DATES

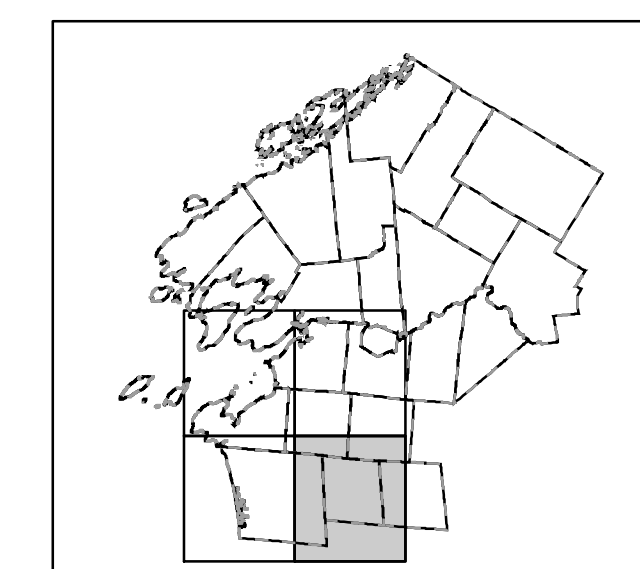
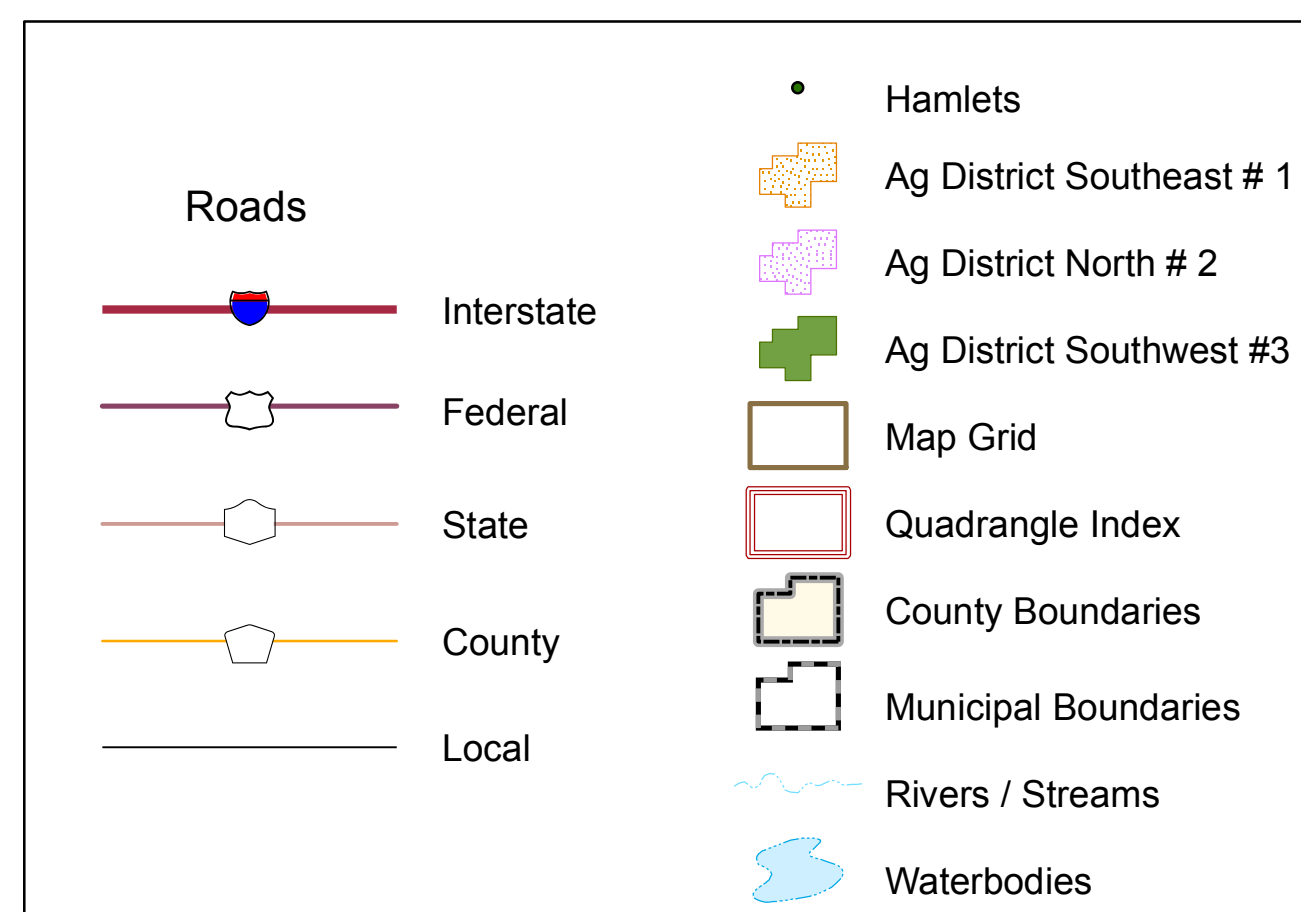
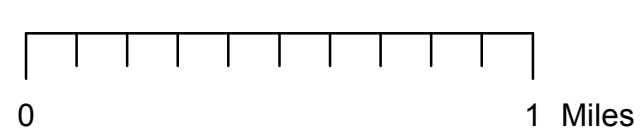
DATE	DATE
03/08/2005	09/06/2006
02/15/2007	02/06/2008
12/31/2008	01/15/2010
11/22/2011	11/29/2014
12/15/2015	04/17/2017

DATE	MAP STATUS-IRIS
4-13-2004	8 YEAR REVIEW-MODIFIED (CONSOLIDATION OF 10, 11, PART OF 6)
8-17-2004	CERTIFIED, #10 as "PARENT DISTRICT"
8-3-2010	JEFFERSON COUNTY BOL ADOPTED MODIFIED DISTRICT
1-14-2011	CERTIFIED
11-15-2017	JEFFERSON COUNTY BOL ADOPTED MODIFIED DISTRICT

7 1/2' QUADRANGLES

- ADAMS
- ELLISBURG
- HENDERSON
- HENDERSON BAY
- RODMAN
- SACKETS HARBOR
- SANDY CREEK
- WATERTOWN

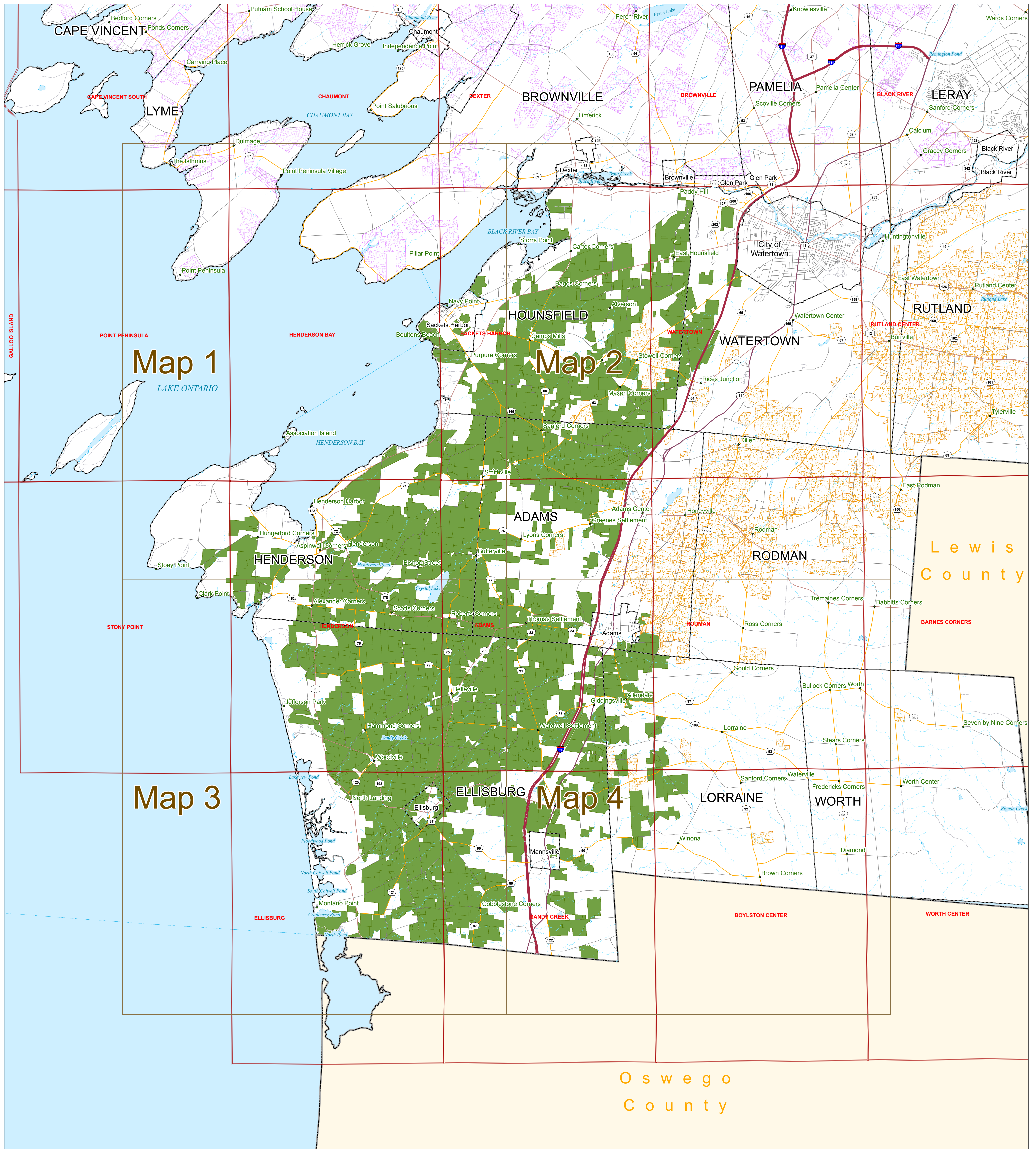
1:24,000



Map prepared by the Jefferson County Department of Planning

New York Central State Plane coordinate system
 1983 North American datum
Data Sources
 Jefferson County Real Property Tax Services - 2017 Parcels
 NYS Office of Cyber Security and Critical Infrastructure Coordination
 US Census Bureau





JEFFERSON COUNTY AGRICULTURAL DISTRICT #3 SOUTHWEST - INDEX MAP
ADAMS, RODMAN & SANDY CREEK QUADRANGLES

COUNTY: JEFFERSON
 DISTRICT NUMBER: 3, SOUTHWEST
 TOWNS: ADAMS, ELLISBURG, HENDERSON, HOUNSFIELD, LORRAINE, and WATERTOWN
 CREATION DATE: 02-04-1986

7 1/2' QUADRANGLES

ADAMS
 ELLISBURG
 HENDERSON
 HENDERSON BAY
 RODMAN
 SACKETS HARBOR
 SANDY CREEK
 WATERTOWN

DATE

4-13-2004
 8-17-2004
 8-3-2010
 1-14-2011
 11-15-2017

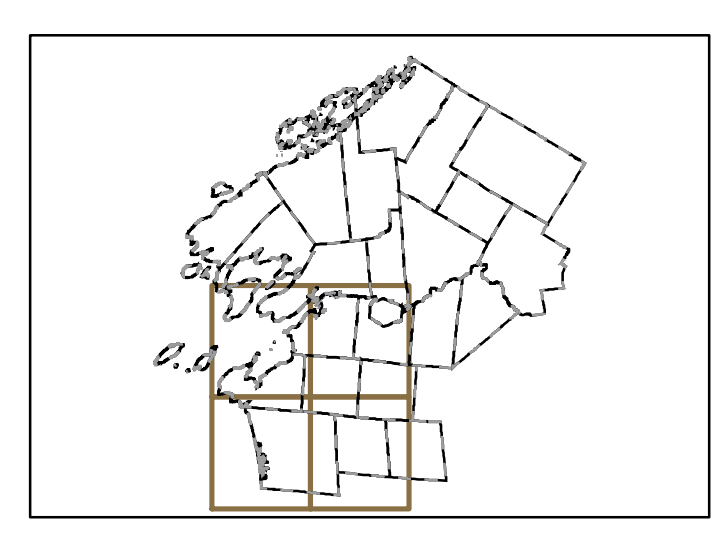
MAP STATUS-IRIS

8 YEAR REVIEW-MODIFIED (CONSOLIDATION OF 10, 11, PART OF 6)
 CERTIFIED, #10 AS "PARENT DISTRICT"
 JEFFERSON COUNTY BOL ADOPTED MODIFIED DISTRICT
 CERTIFIED
 JEFFERSON COUNTY BOL ADOPTED MODIFIED DISTRICT

303b ADDITIONS DATES

03/08/2005 09/08/2008
 02/15/2007 02/08/2008
 12/31/2008 01/15/2010
 11/22/2011 11/29/2014
 12/15/2015 04/17/2017

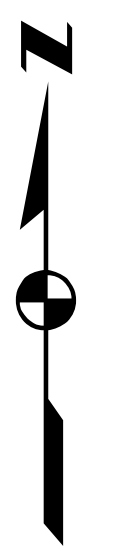
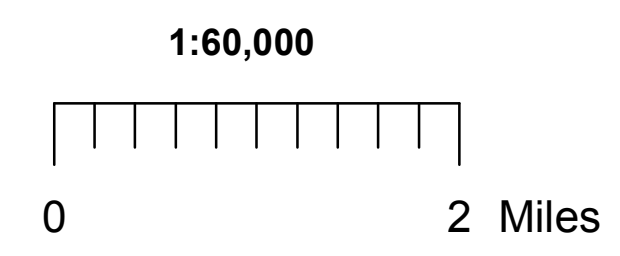
Roads		Map Grid	
	Interstate		Map Grid
	Federal		Quadrangle Index
	State		Hamlets
	County		Ag District Southeast # 1
	Town		Ag District North # 2
	Village		Ag District Southwest # 3
	Private		County Boundaries
			Municipal Boundaries
			Rivers / Streams
			Waterbodies

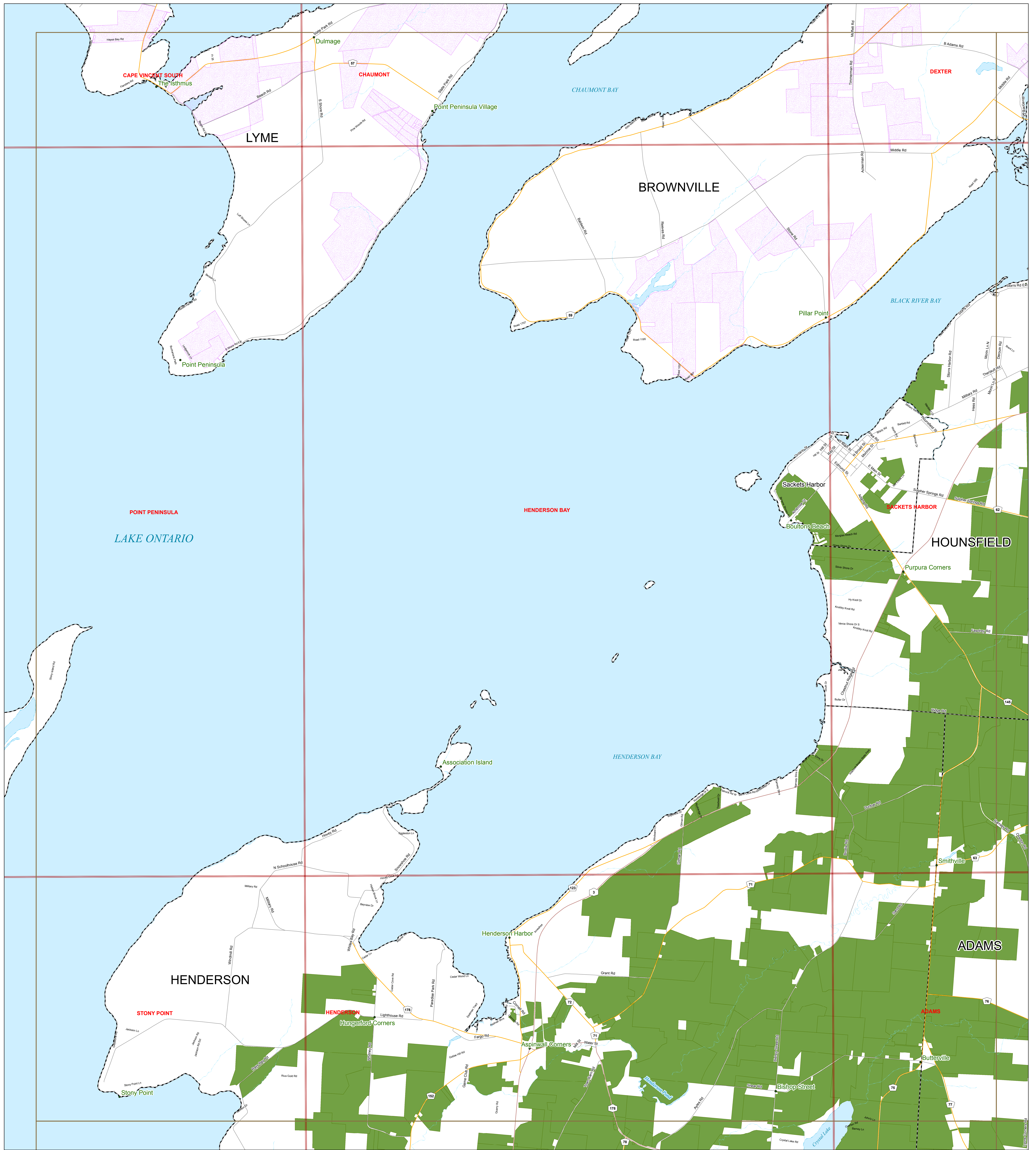


Map prepared by the Jefferson County Department of Planning

New York Central State Plane coordinate system
 1983 North American datum

Data Sources
 Jefferson County Real Property Tax Services - 2017 Parcels
 NYS Office of Cyber Security and Critical Infrastructure Coordination
 US Census Bureau





**JEFFERSON COUNTY AGRICULTURAL DISTRICT #3 SOUTHWEST - MAP 1
ADAMS, HENDERSON, HENDERSON BAY & SACKETS HARBOR QUADRANGLES**

COUNTY: JEFFERSON

DISTRICT NUMBER: 3, SOUTHWEST

TOWNS: ADAMS, ELLISBURG, HENDERSON, HOUNSFIELD, LORRAINE, and WATERTOWN

CREATION DATE: 02-04-1986

SHEET 3 OF 4

303b ADDITIONS DATES

03/08/2005	09/06/2006
02/15/2007	02/06/2008
12/31/2008	01/15/2010
11/22/2011	11/29/2014
12/15/2015	04/17/2017

7 1/2' QUADRANGLES

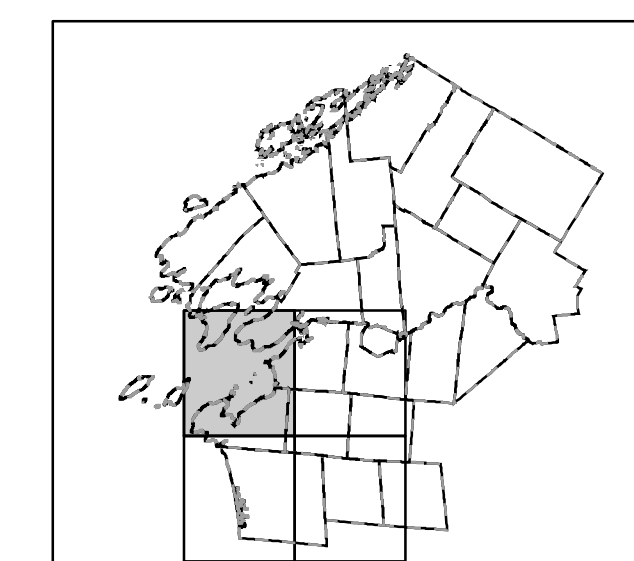
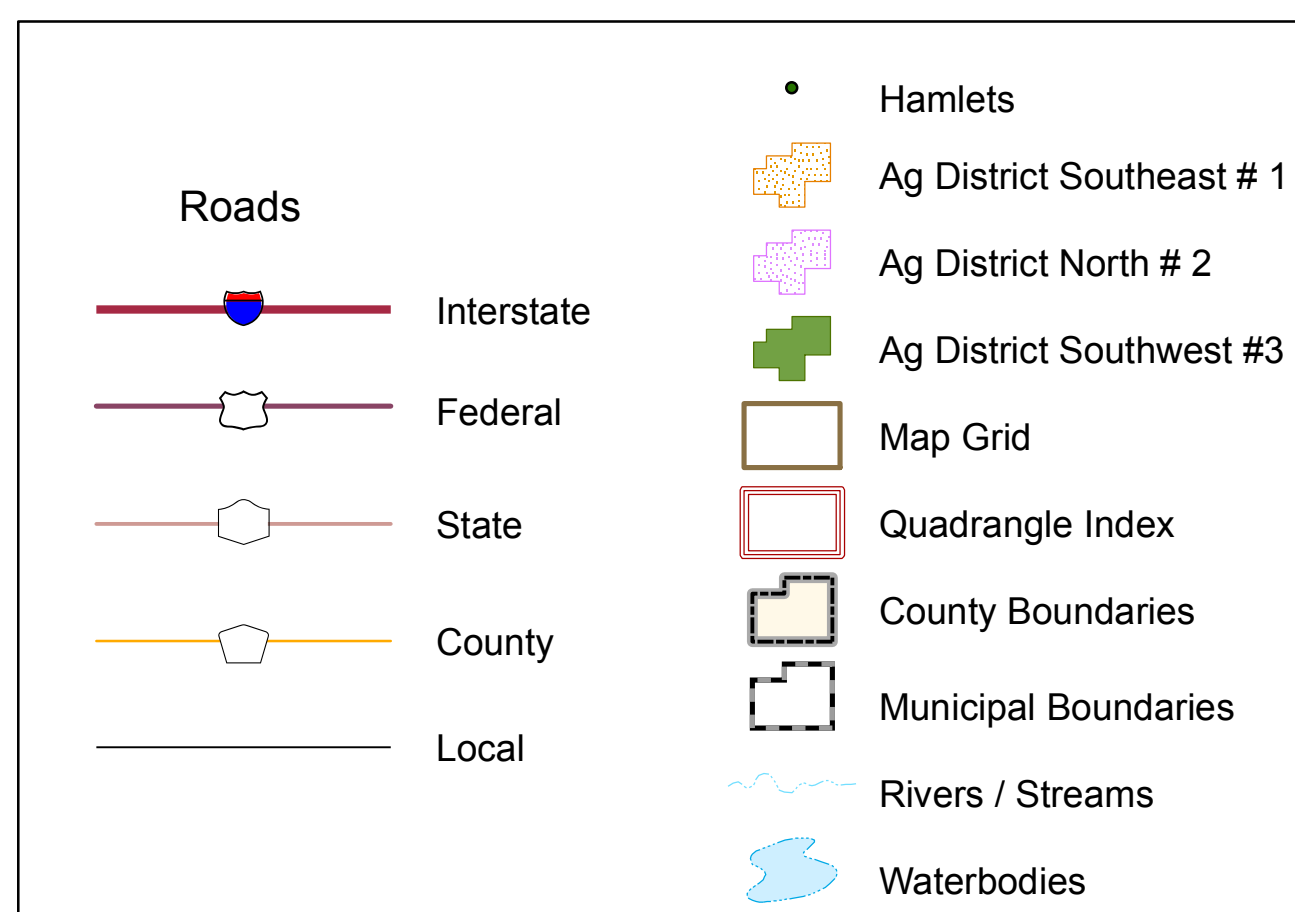
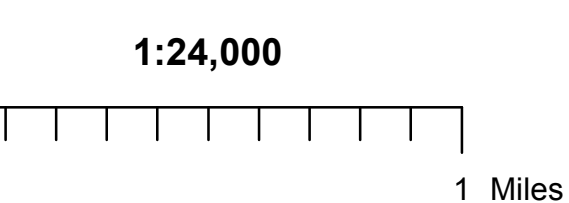
- ADAMS
- ELLISBURG
- HENDERSON
- HENDERSON BAY
- RODMAN
- SACKETS HARBOR
- SANDY CREEK
- WATERTOWN

DATE

- 4-13-2004
- 8-17-2004
- 8-3-2010
- 1-14-2011
- 11-15-2017

MAP STATUS-IRIS

- 8 YEAR REVIEW-MODIFIED (CONSOLIDATION OF 10, 11, PART OF 6)
- CERTIFIED, #10 as "PARENT DISTRICT"
- JEFFERSON COUNTY BOL ADOPTED MODIFIED DISTRICT
- CERTIFIED
- JEFFERSON COUNTY BOL ADOPTED MODIFIED DISTRICT

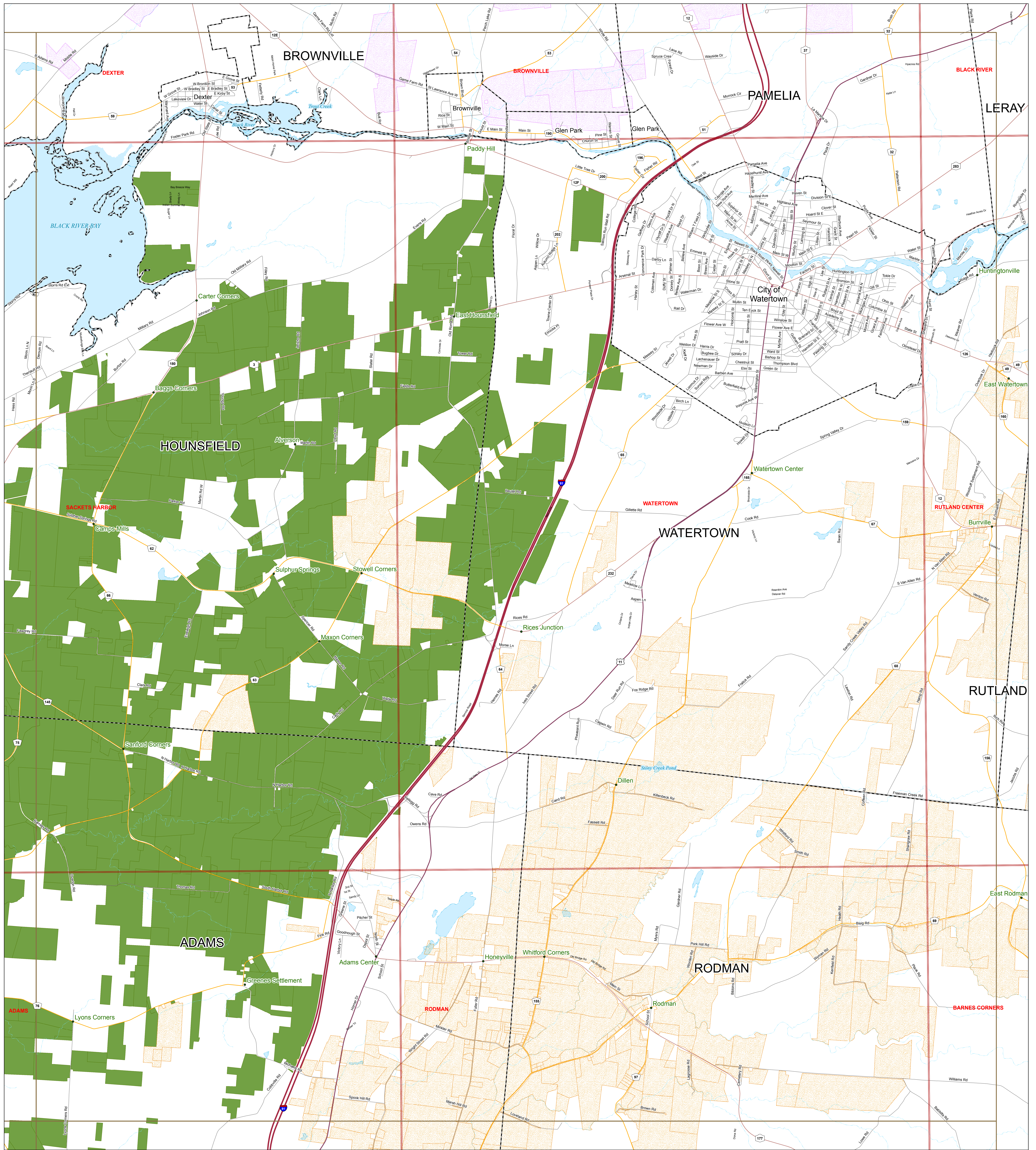


Map prepared by the Jefferson County Department of Planning

New York Central State Plane coordinate system
1983 North American datum

Data Sources
Jefferson County Real Property Tax Services - 2017 Parcels
NYS Office of Cyber Security and Critical Infrastructure Coordination
US Census Bureau





**JEFFERSON COUNTY AGRICULTURAL DISTRICT #3 SOUTHWEST - MAP 2
ADAMS, RODMAN, SACKETS HARBOR & WATERTOWN QUADRANGLES**

COUNTY: JEFFERSON
 DISTRICT NUMBER: 3, SOUTHWEST
 TOWNS: ADAMS, ELLISBURG, HENDERSON, HOUNSFIELD, LORRAINE, and WATERTOWN
 CREATION DATE: 02-04-1986

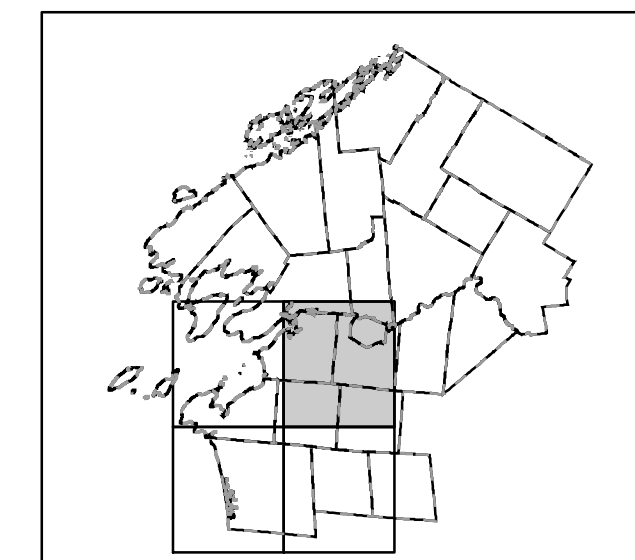
SHEET 3 OF 4

7 1/2' QUADRANGLES
 ADAMS
 ELLISBURG
 HENDERSON
 HENDERSON BAY
 RODMAN
 SACKETS HARBOR
 SANDY CREEK
 WATERTOWN

DATE	MAP STATUS-IRIS
4-13-2004	8 YEAR REVIEW-MODIFIED (CONSOLIDATION OF 10, 11, PART OF 6)
8-17-2004	CERTIFIED, #10 as "PARENT DISTRICT"
8-3-2010	JEFFERSON COUNTY BOL ADOPTED MODIFIED DISTRICT
1-14-2011	CERTIFIED
11-15-2017	JEFFERSON COUNTY BOL ADOPTED MODIFIED DISTRICT

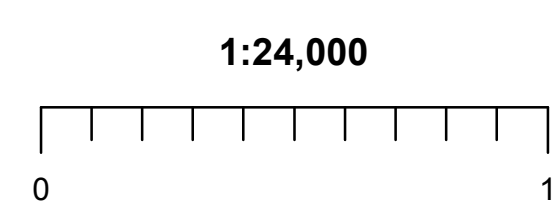
303b ADDITIONS DATES	
03/08/2005	09/06/2006
02/15/2007	02/06/2008
12/31/2008	01/15/2010
11/22/2011	11/29/2014
12/15/2015	04/17/2017

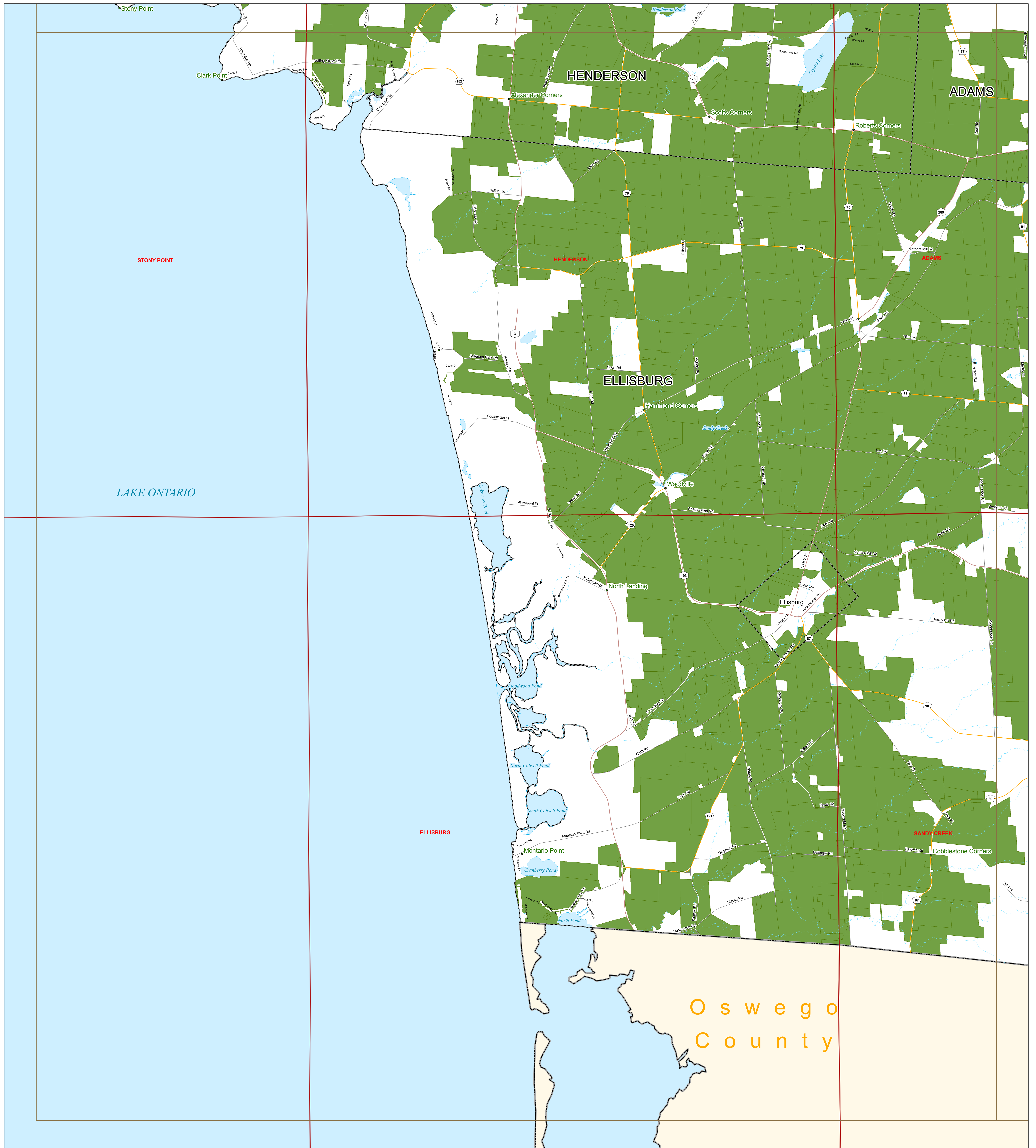
Roads	Hamlets
Interstate	Ag District Southeast # 1
Federal	Ag District North # 2
State	Ag District Southwest # 3
County	Map Grid
Local	Quadrangle Index
Rivers / Streams	County Boundaries
Waterbodies	Municipal Boundaries



Map prepared by the Jefferson County Department of Planning

New York Central State Plane coordinate system
 1983 North American datum
Data Sources
 Jefferson County Real Property Tax Services - 2017 Parcels
 NYS Office of Cyber Security and Critical Infrastructure Coordination
 US Census Bureau





**JEFFERSON COUNTY AGRICULTURAL DISTRICT #3 SOUTHWEST - MAP 3
ADAMS, ELLISBURG, HENDERSON & SANDY CREEK QUADRANGLES**

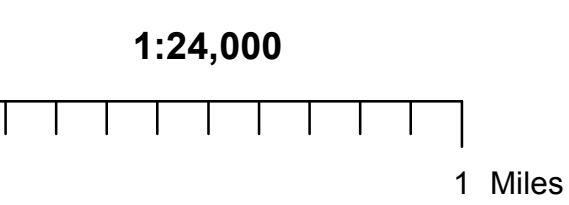
COUNTY: JEFFERSON
 DISTRICT NUMBER: 3, SOUTHWEST
 TOWNS: ADAMS, ELLISBURG, HENDERSON, HOUNSFIELD, LORRAINE, and WATERTOWN
 CREATION DATE: 02-04-1986

SHEET 3 OF 4

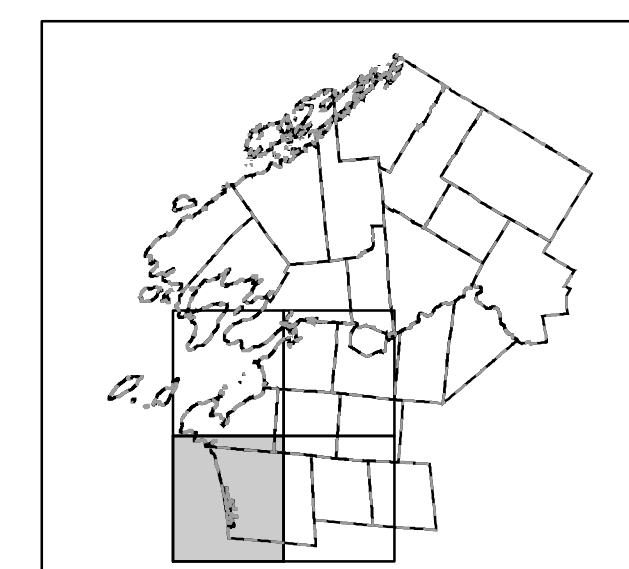
303b ADDITIONS DATES	
03/08/2005	09/06/2006
02/15/2007	02/06/2008
12/31/2008	01/15/2010
11/22/2011	11/29/2014
12/15/2015	04/17/2017

7 1/2' QUADRANGLES
 ADAMS
 ELLISBURG
 HENDERSON
 HENDERSON BAY
 RODMAN
 SACKETS HARBOR
 SANDY CREEK
 WATERTOWN

DATE	MAP STATUS-IRIS
4-13-2004	8 YEAR REVIEW-MODIFIED (CONSOLIDATION OF 10, 11, PART OF 6)
8-17-2004	CERTIFIED, #10 as "PARENT DISTRICT"
8-3-2010	JEFFERSON COUNTY BOL ADOPTED MODIFIED DISTRICT
1-14-2011	CERTIFIED
11-15-2017	JEFFERSON COUNTY BOL ADOPTED MODIFIED DISTRICT



Roads	Hamlets
Interstate	Ag District Southeast # 1
Federal	Ag District North # 2
State	Ag District Southwest # 3
County	Map Grid
Local	Quadrangle Index
	County Boundaries
	Municipal Boundaries
	Rivers / Streams
	Waterbodies

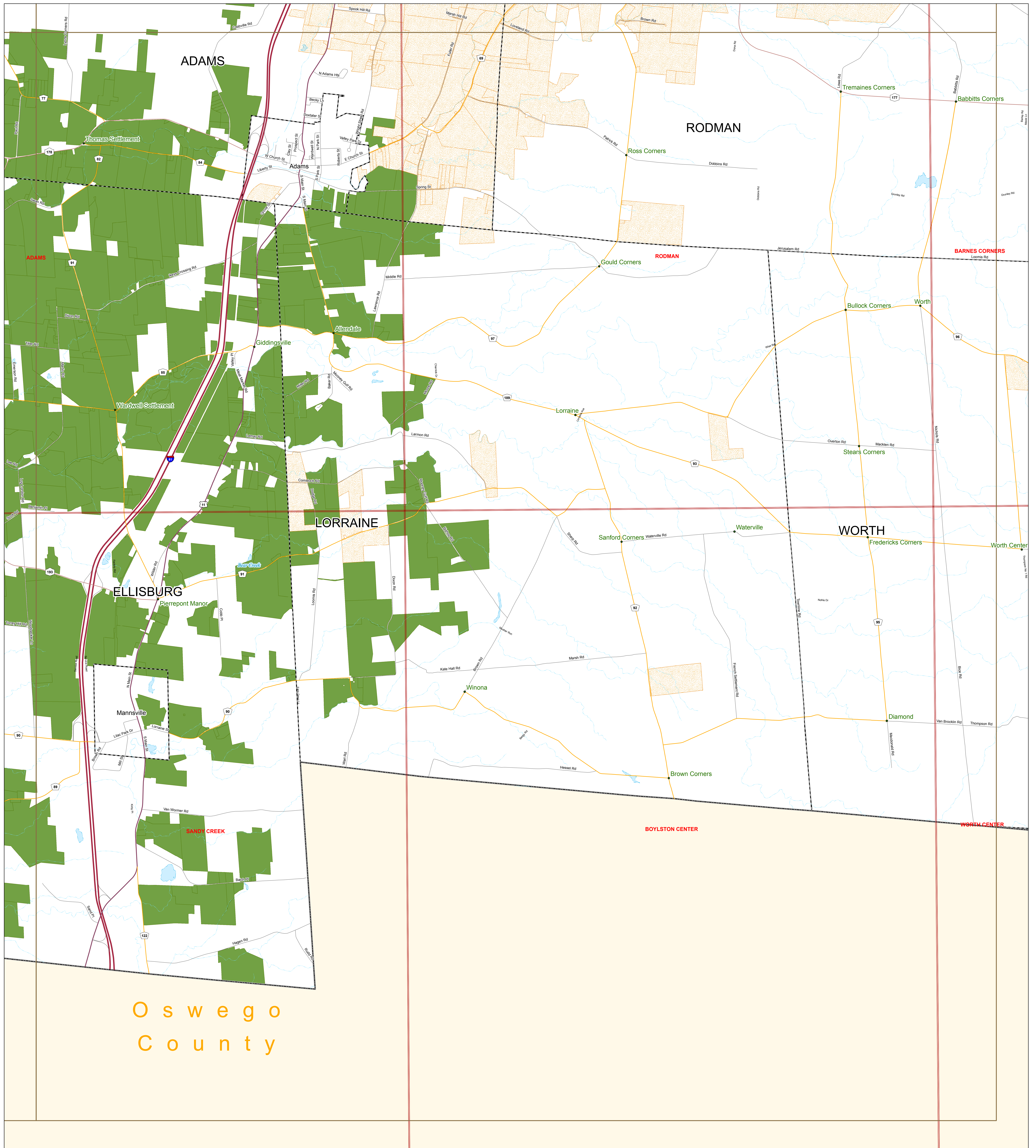


Map prepared by the Jefferson County Department of Planning

New York Central State Plane coordinate system
 1983 North American datum

Data Sources
 Jefferson County Real Property Tax Services - 2017 Parcels
 NYS Office of Cyber Security and Critical Infrastructure Coordination
 US Census Bureau





Oswego
County

**JEFFERSON COUNTY AGRICULTURAL DISTRICT #3 SOUTHWEST - MAP 4
ADAMS, RODMAN & SANDY CREEK QUADRANGLES**

COUNTY: JEFFERSON
DISTRICT NUMBER: 3, SOUTHWEST
TOWNS: ADAMS, ELLISBURG, HENDERSON, HOUNSFIELD, LORRAINE, and WATERTOWN
CREATION DATE: 02-04-1986

SHEET 3 OF 4

303b ADDITIONS DATES

DATE	DATE
03/08/2005	09/06/2006
02/15/2007	02/06/2008
12/31/2008	01/15/2010
11/22/2011	11/29/2014
12/15/2015	04/17/2017

7 1/2' QUADRANGLES

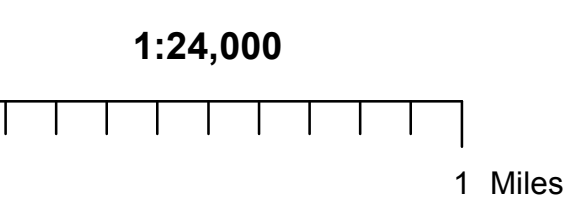
ADAMS
ELLISBURG
HENDERSON
HENDERSON BAY
RODMAN
SACKETS HARBOR
SANDY CREEK
WATERTOWN

DATE

4-13-2004
8-17-2004
8-3-2010
1-14-2011
11-15-2017

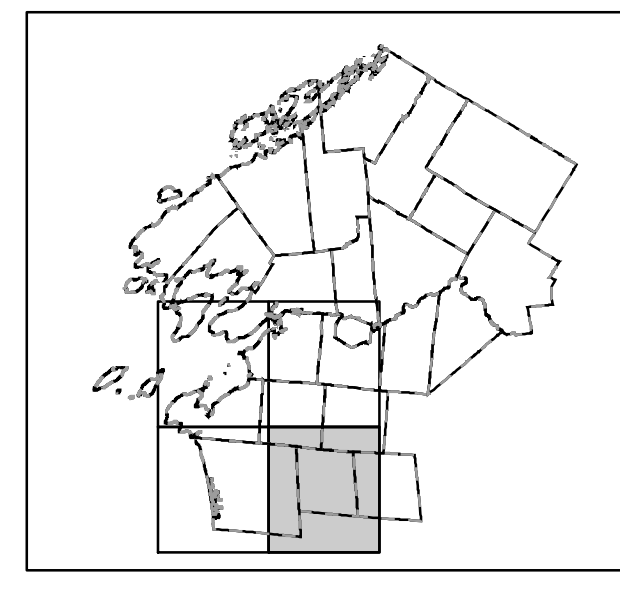
MAP STATUS-IRIS

8 YEAR REVIEW-MODIFIED (CONSOLIDATION OF 10, 11, PART OF 6)
CERTIFIED, #10 as "PARENT DISTRICT"
JEFFERSON COUNTY BOL ADOPTED MODIFIED DISTRICT
CERTIFIED
JEFFERSON COUNTY BOL ADOPTED MODIFIED DISTRICT



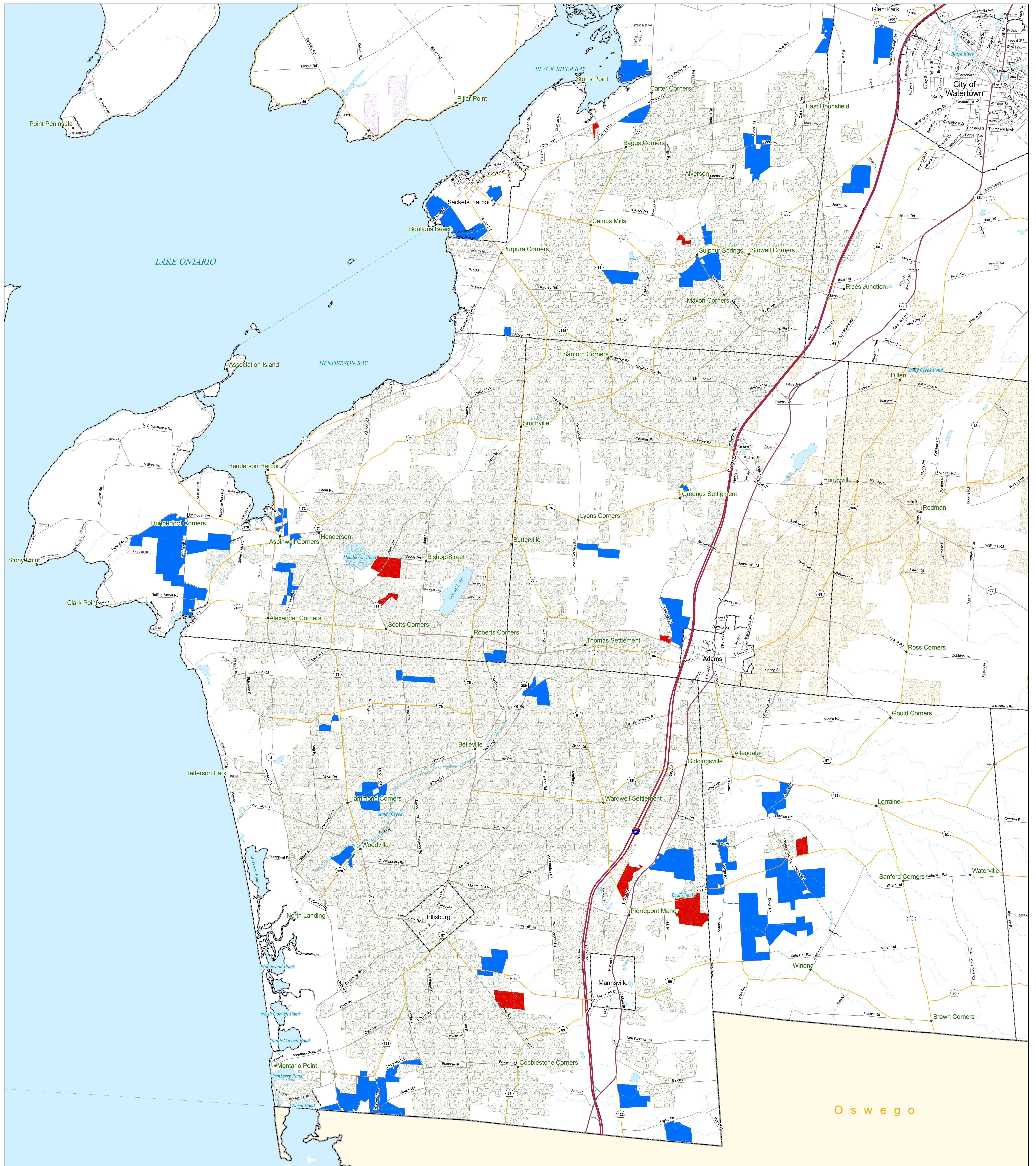
Roads	
	Interstate
	Federal
	State
	County
	Local

	Hamlets
	Ag District Southeast # 1
	Ag District North # 2
	Ag District Southwest #3
	Map Grid
	Quadrangle Index
	County Boundaries
	Municipal Boundaries
	Rivers / Streams
	Waterbodies



Map prepared by the Jefferson County Department of Planning
New York Central State Plane coordinate system
1983 North American datum
Data Sources
Jefferson County Real Property Tax Services - 2017 Parcels
NYS Office of Cyber Security and Critical Infrastructure Coordination
US Census Bureau



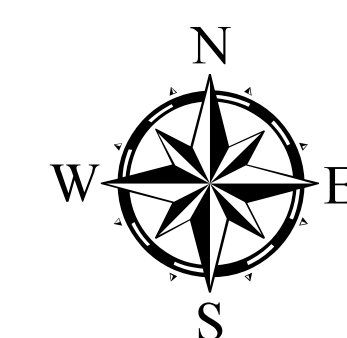


Southwest Agricultural District Eight Year Review 2010 Proposed Changes

- | | | |
|--------------|---------------------------|-------------------------|
| Roads | • Hamlets | Proposed Changes |
| Interstate | Ag District Southeast # 1 | Add |
| Federal | Ag District North # 2 | Delete |
| State | Ag District Southwest #3 | |
| County | County Boundaries | |
| Town | Municipal Boundaries | |
| Village | Fort Drum Boundary | |
| Private | Rivers / Streams | |
| | Waterbodies | |

0 10,000 20,000 Feet

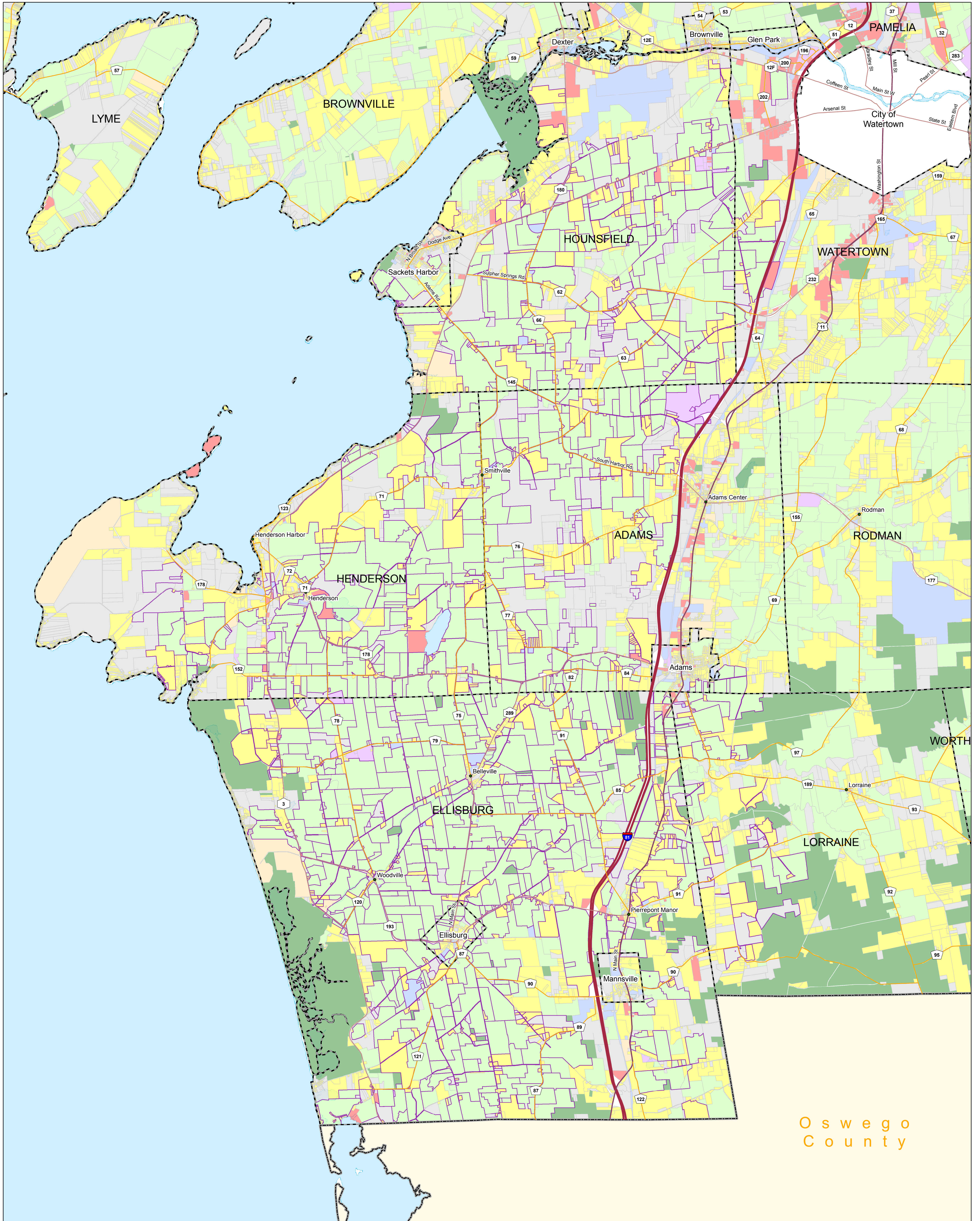
1:40,500
1 inch = 3,375 feet



Map prepared by the Jefferson County Department of Planning
June 2010

New York Central State Plane coordinate system
1983 North American datum

Data Sources
Jefferson County Real Property Tax Services - 2009 Parcels
NYS Office of Cyber Security and Critical Infrastructure Coordination
US Census Bureau



Oswego
County

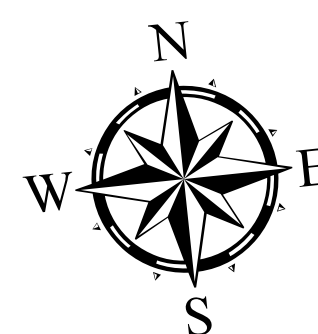
Land Use by Assessment 2016

- Agricultural
- Vacant
- Residential
- Commercial
- Community Services; Public Services
- Industrial
- Recreation and Entertainment
- Wild, Forest, Conservation, Public Parks

Current Land Use by Assessment
of Southwest Agricultural District

0 5 10 Miles
1:60,000

- Ag District Southwest #3
- County Boundaries
- Municipal Boundaries
- Fort Drum Boundary
- Hamlets
- Waterbodies



Updated to
March 2017

New York Central State Plane coordinate system
1983 North American datum

Data Sources
Jefferson County Real Property Tax Services - 2015 Parcels
NYS Office of Cyber Security and Critical Infrastructure Coordination